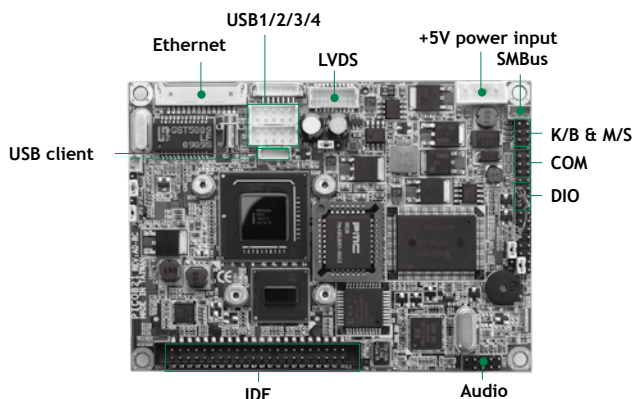


PICO821

Intel® Atom™ Z510/ Z530 Pico-ITX SBC with LVDS LCD, PATA, LAN and CF



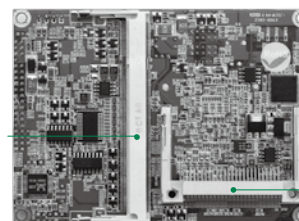
Atom™ Z500
Intel® US15W
LVDS
5 USB 2.0
CompactFlash™



Fanless Low Power

Features

- Ultra low power Intel® Atom™ processor Z510/ Z530
- Intel® System Controller Hub US15W
- 1 COM and 5 USB 2.0 (1 client port) supported
- LVDS LCD supported
- 1 PATA and 1 CompactFlash™
- 1 10/100/1000Mbps Ethernet
- Minimum 9 Watt power requirement



DDR2 SO-DIMM

CF type-II

▲ Rear view

System

CPU	Intel® Atom™ processor Z510 1.1 GHz and Z530 1.6 GHz onboard with FSB 400/533 MHz
System Memory	1 x 200-pin SO-DIMM supports DDR2-400/533 max. up to 2 GB
Chipset	Intel® System Controller Hub US15W
BIOS	Phoenix-Award
SSD	1 x CompactFlash™ type-II
Watchdog Timer	255 Levels, 1~255 sec.
Expansion Interface	N/A
Battery	Lithium 3V/225 mA
Power Input	1 x 4-pin connector +5V DC-in only AT Auto Power on function supported
Power Requirements	*Intel® Atom™ Z530 @1.6 GHz, 1GB DDR2 Max. RMS: +5V @ 1.59A *Intel® Atom™ Z510 @1.1 GHz, 1GB DDR2 Max. RMS: +5V @ 1.387A
Size	100 x 72 mm
Board Thickness	1.6 mm
Temperature	0° C ~ +60° C (32° F ~ 140° F), operation
Relative Humidity	10% ~ 95% relative humidity, non-condensing

I/O

MIO	1 x IDE; PATA-100 1 x PS/2 keyboard and mouse 1 x RS-232
SATA	N/A
Hardware Monitoring	Detect CPU/system temperature and voltage
Ethernet	1 port as 10/100/1000Mbps supports Wake-on-LAN RPL/PXE Boot ROM with Realtek RTL8111B
Audio	HD Codec audio as Mic-in/Line-in/Line-out with Realtek ALC886
USB	5 x USB 2.0 (1 client port)
SMBus	System Management Bus for advanced monitoring/control interface
Digital I/O	6 channels IN/OUT programmable

Display

Chipset	Intel® GMA 500 graphics Core
Memory Size	Max. up to 256MB
Display Interface	1 x LVDS; 18/24-bit single channel

Packing List

Standard		
Quick installation guide, user's manual/utility CD, cable		
Cable		
Part Number	Description	Qty
E393221101	AX93221 24bit LVDS to DVI-D Bd.	1
5938H821040E	PICO821 LVDS to AX93221 cable	1
59382631000E	2 x USB cable	2
5938H821030E	USB client port cable	1
5938H821000E	COM + KB cable	1
5938H821010E	audio cable	1
85932021000E	AX93202 RJ-45 Bd.	1
59093201000E	PICO821 to AX93202 cable	1
5938H821020E	Power in cable	1

Ordering Information

Standard	
PICO821LGA-Z510 (P/N:E38H821100)	Pico-ITX SBC with Intel® Atom™ processor Z510 1.1 GHz, LVDS LCD, PATA, 10/100/1000Mbps Ethernet, CF and DVI-D kit
PICO821LGA-Z530 (P/N:E38H821102)	Pico-ITX SBC with Intel® Atom™ processor Z530 1.6 GHz, LVDS LCD, PATA, 10/100/1000Mbps Ethernet, CF and DVI-D kit